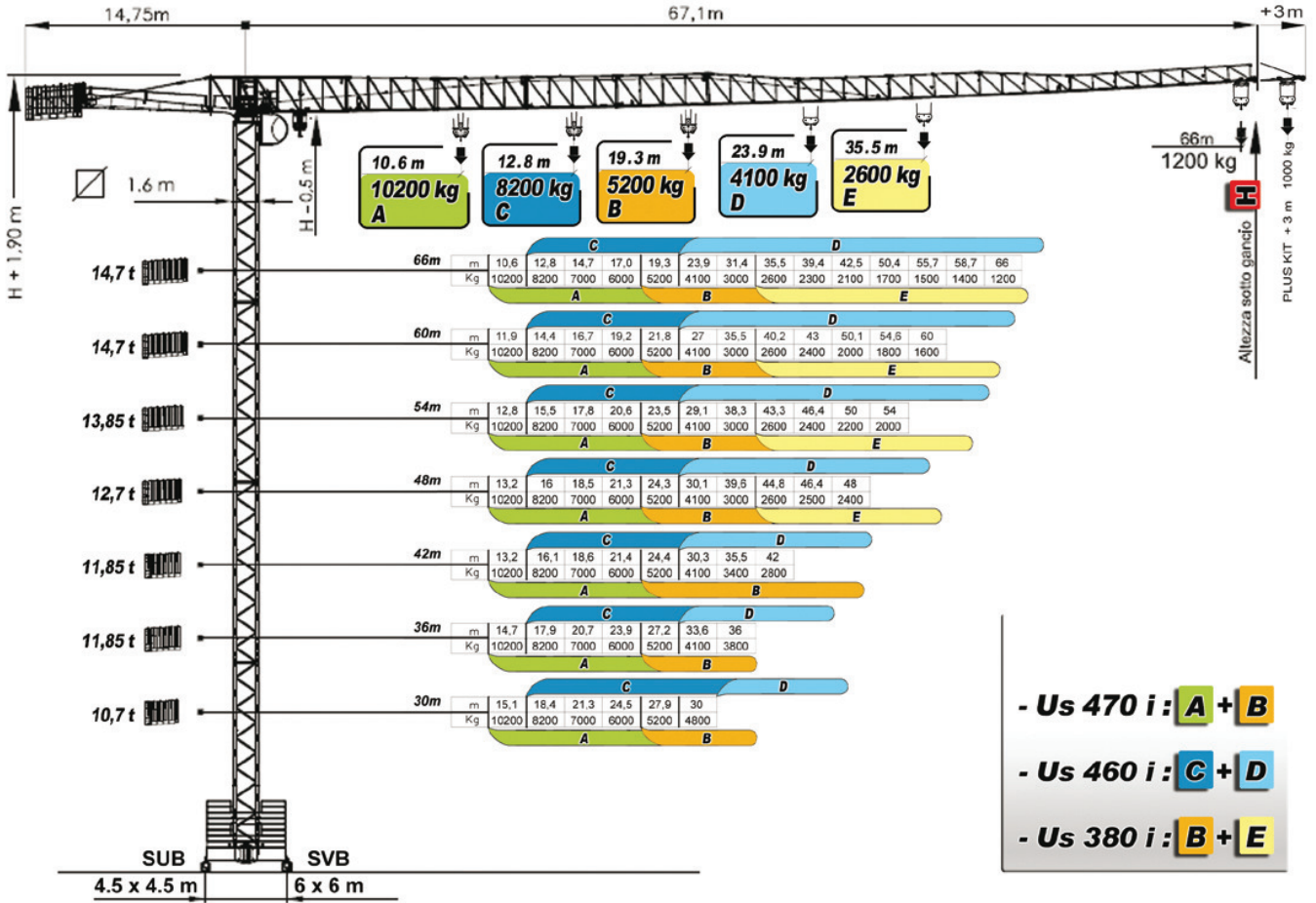


sky 760

CRANES®



I dati e le misure hanno un valore indicativo, pertanto non sono impegnativi - Technical data are not binding and are only indicative.



- Us 470 i : **A + B**
- Us 460 i : **C + D**
- Us 380 i : **B + E**

COMPOSIZIONE TORRE

MASTS COMPOSITION

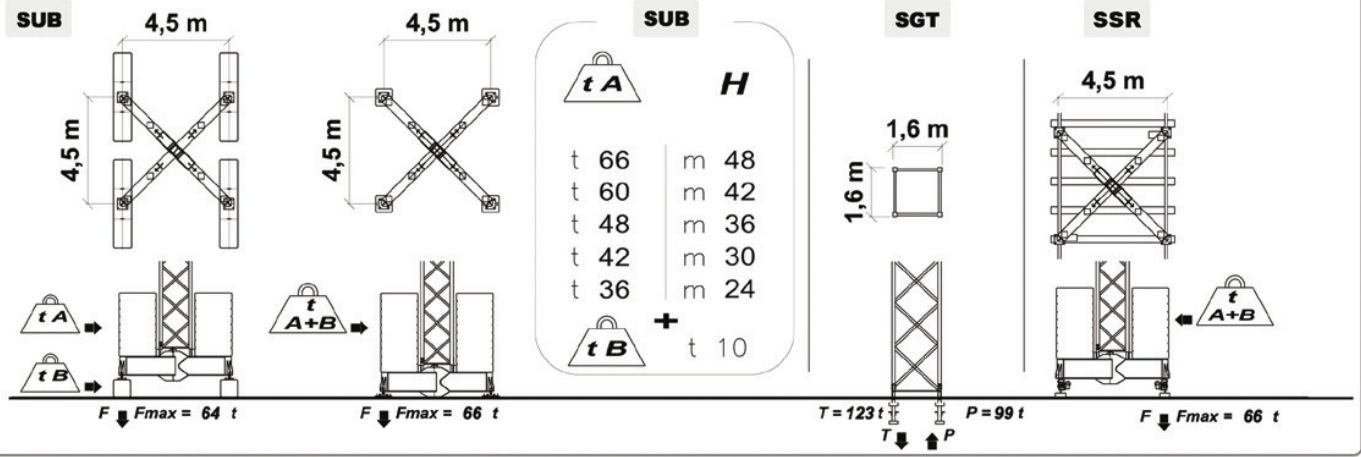
H- SGT	13,3 m	15,3 m	17,3 m	19,3 m	21,3 m	23,3 m	25,3 m	27,3 m	29,3 m	31,3 m	33,3 m	35,3 m	37,3 m	43,3 m	49,3 m	55,3 m	134,0 m	H- SGV	56,1 m	62,1 m
H- SUB	14,4 m	16,4 m	18,4 m	20,4 m	22,4 m	24,4 m	26,4 m	28,4 m	30,4 m	32,4 m	34,4 m	36,4 m	38,4 m	44,4 m	50,4 m	56,4 m	Ⓢ ANC			
H- SUB+	14,9 m	16,9 m	18,9 m	20,9 m	22,9 m	24,9 m	26,9 m	28,9 m	30,9 m	32,9 m	34,9 m	36,9 m	38,9 m	44,9 m	50,9 m	56,9 m				
ELEMENTS COMPOSITION	TTN	TTD +TTD +TTF	TTD +TTN	TTF +TTN	TTD +TTD +TTN	TTD +TJF +TTN	TTN	TTD +TTD +TTF +TTN	TTD +TTN	TTF +TTN	TTD +TTD +TTN	TTD +TTF +TTN	TTN	TTN +TTN	TTN +TTN +TTN	TTN +TTN +TTN +TUF	US380I	TTN +TTN	TTN +TTN	
● = STANDARD	●			●			●			●			●	●	●		US460I	TTN +TTN +JTT	TTN +TTN +JTT	
																	US470I	+TVF +TVF +TVF	+TVF +TVF +TVF	
																	Ⓢ			

FEM 1.001-A4



SUPPORTI

GROUND SUPPORTS

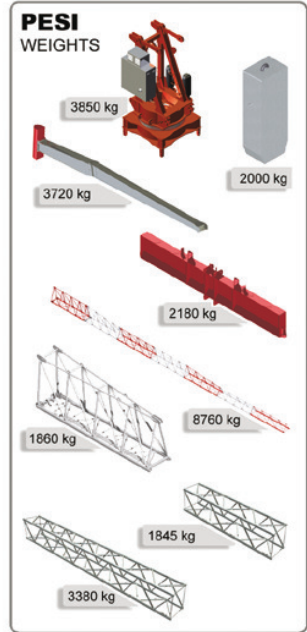


GRUPPO MOTORE

MOTOR GROUP



	Us 460 i			Us 380 i			Us 470 i		
	kg	m/min	kW	kg	m/min	kW	kg	m/min	kW
SOLLEVAMENTO HOIST	0 < • <4100	1	5	0 < • <2600	1	5	0 < • <5200	1	6
	0 < • <4100	2	33	0 < • <2600	2	32	0 < • <5200	2	26
	0 < • <2600	3	50	0 < • <1300	3	56	0 < • <3000	3	46
	0 < • <2600	4	76 > m/min > 50 VARIOMATIC	0 < • <1300	4	75 > m/min > 56 VARIOMATIC	0 < • <3000	4	74 > m/min > 46 VARIOMATIC
	ELECTRONIC FINE ADJUSTMENT			ELECTRONIC FINE ADJUSTMENT			ELECTRONIC FINE ADJUSTMENT		
	0 < • <8200	1	2,5	0 < • <5200	1	2,5	0 < • <10200	1	3
	0 < • <8200	2	16,5	0 < • <5200	2	16	0 < • <10200	2	13
	0 < • <5200	3	25	0 < • <2600	3	28	0 < • <6000	3	23
	0 < • <5200	4	38 > m/min > 25 VARIOMATIC	0 < • <2600	4	37,5 > m/min > 28 VARIOMATIC	0 < • <6000	4	37 > m/min > 23 VARIOMATIC
	ELECTRONIC FINE ADJUSTMENT			ELECTRONIC FINE ADJUSTMENT			ELECTRONIC FINE ADJUSTMENT		
CARRELLO TROLLEY	0 < • <MAX	1	14	0 < • <MAX	1	12	0 < • <MAX	1	14
	0 < • <MAX	2	39	0 < • <MAX	2	29	0 < • <MAX	2	39
	0 < • <2600	3	78	0 < • <2600	3	58	0 < • <3000	3	78
ELECTRONIC FINE ADJUSTMENT			ELECTRONIC FINE ADJUSTMENT			ELECTRONIC FINE ADJUSTMENT			
ROTAZIONE SLEWING	rpm		Nm		rpm		Nm		
	0	0,3	1	2 x 65	0,3	0,8	2	2 x 65	
ELECTRONIC SENSITIVE SLEWING									
TRASL. RAIL	m/min		kW		m/min		kW		
	12		4 x 2,2		12		4 x 2,2		



LOAD
t m MOMENT
WIND SPEED
BASE TILTING
TROLLEY POS.
SLEW POS.
SMART FUNCT.

DBLink +
4.0





sky 760