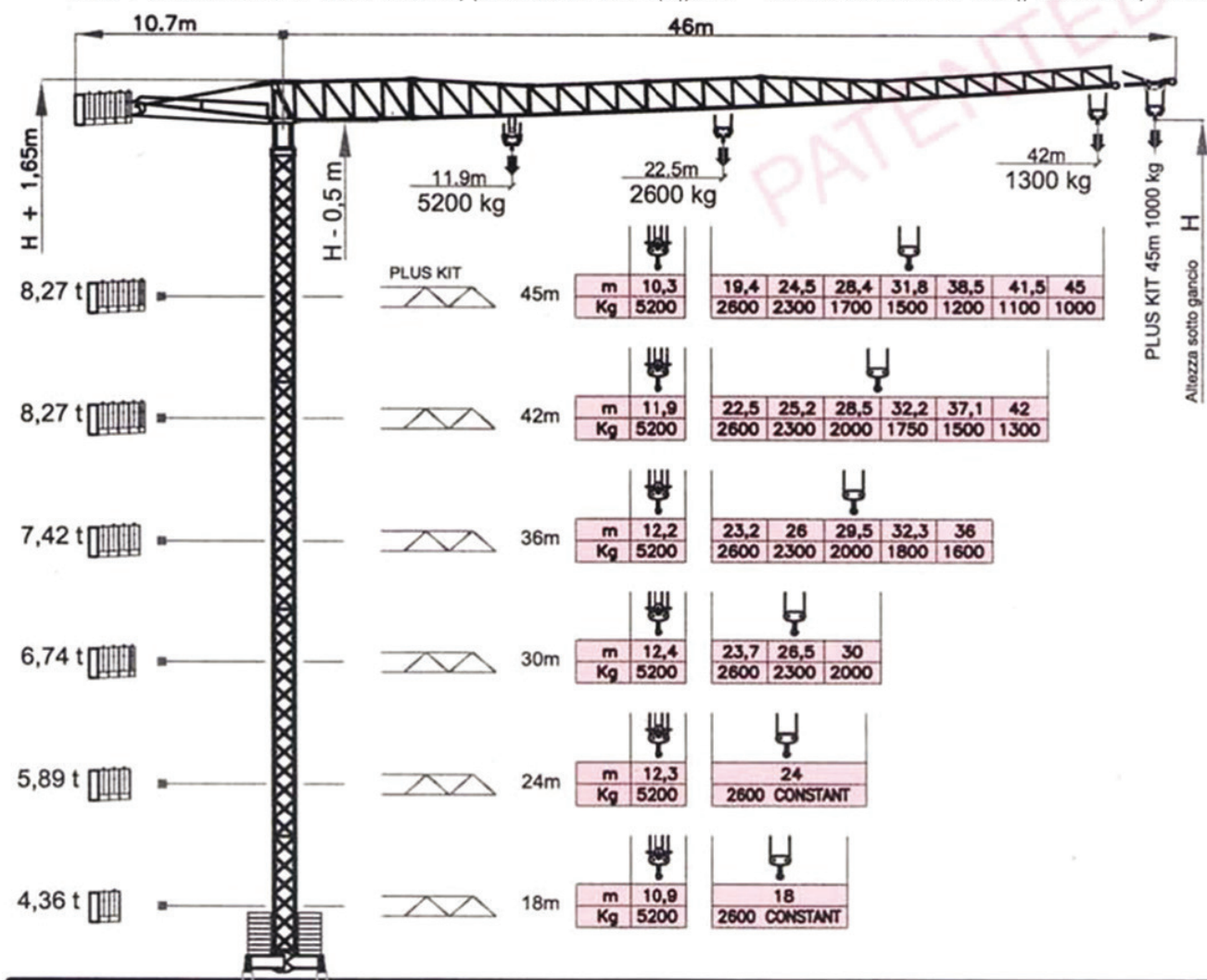


sky400

CRANES®



I dati e le misure hanno un valore indicativo, pertanto non sono impegnativi - Technical data are not binding and are only indicative.

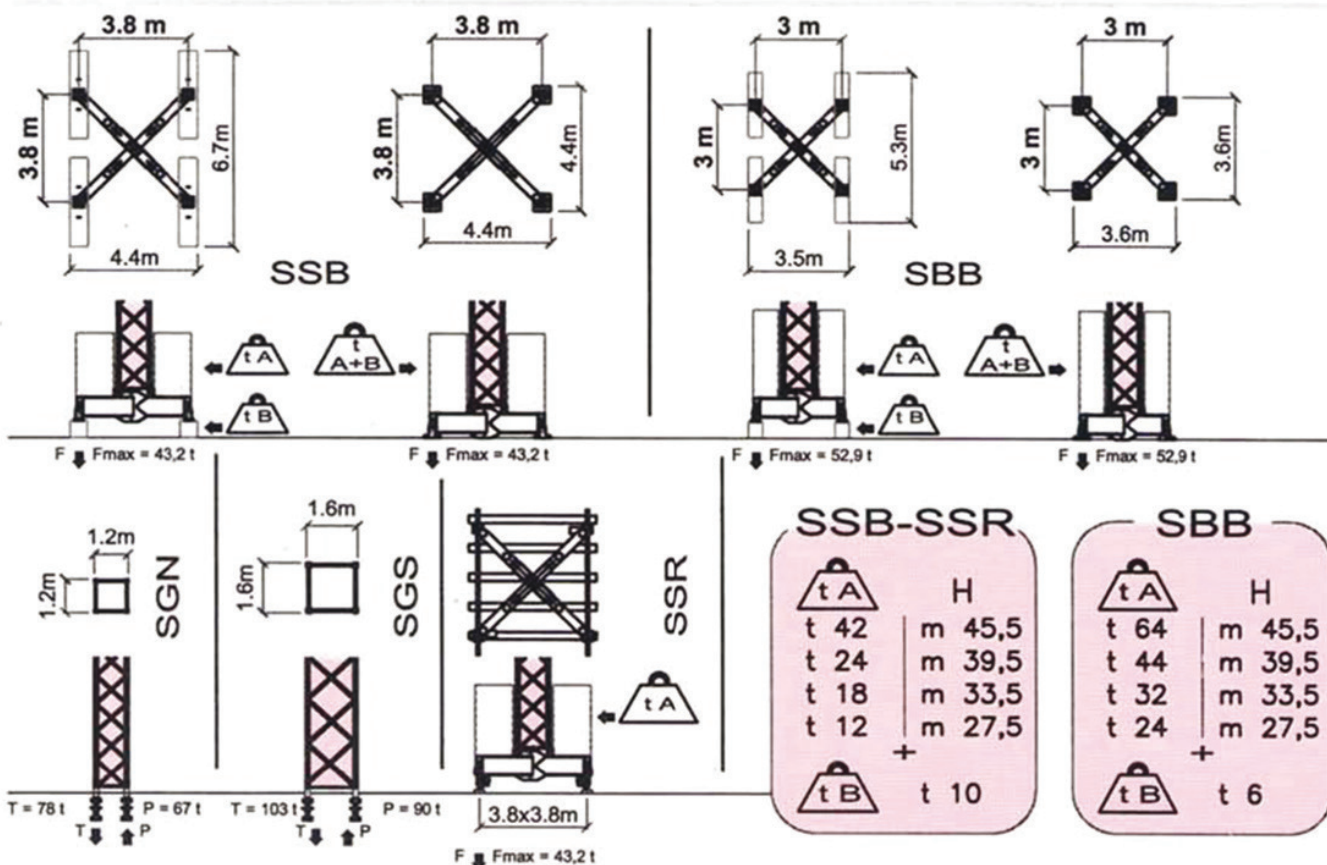


COMPOSIZIONE TORRE

MASTS COMPOSITION

COMPOSICION MASTIL

Configuration	14 m	16 m	18 m	20 m	22 m	24 m	26 m	28 m	30 m	32 m	34 m	36 m	38 m	44 m	51,5 m	57,5 m
H - SGN																
H - SSB / SBB	14,8 m	16,8 m	18,8 m	20,8 m	22,8 m	24,8 m	26,8 m	28,8 m	30,8 m	32,8 m	34,8 m	36,8 m	38,8 m	44,8 m		
H - SSB / SBB + Δ	15,5 m	17,5 m	19,5 m	21,5 m	23,5 m	25,5 m	27,5 m	29,5 m	31,5 m	33,5 m	35,5 m	37,5 m	39,5 m	45,5 m	H-SGS	
ELEMENTS COMPOSITION	TLN	TLD +TLD +TLF	TLD +TLN	TLF +TLN	TLD +TLD +TLN	TLD +TLF +TLN	TLN +TLN	TLD +TLD +TLF +TLN	TLD +TLN +TLN	TLF +TLN +TLN	TLD +TLD +TLN +TLN	TLD +TLF +TLN +TLN	TLN +TLN +TLN	TLN +TLN +TLN	TLN +TLN +TLN	TLN +TLN +TLN
● = STANDARD	●			●			●			●			●	●	●	●



GRUPPO MOTORE MOTOR GROUP GRUPO MOTOR	US 250 S	US 380 I																		
DATI ELETTRICI ELECTRICAL DATA DATOS ELECTRICOS	400 V (+5% -5%) - 50 Hz 27 kW TRIFASE - THREE-PHASE	400 V (+5% -5%) - 50 Hz 31 kW TRIFASE - THREE-PHASE																		
SOLLEVAMENTO HOISTING ELEVACIÓN	<table border="1"> <tr><td>6</td><td>2600</td><td>3,7</td></tr> <tr><td>25</td><td>2600</td><td>14,7</td></tr> <tr><td>50</td><td>1300</td><td>14,7</td></tr> </table>	6	2600	3,7	25	2600	14,7	50	1300	14,7	<table border="1"> <tr><td>7</td><td>2600</td><td rowspan="4">18</td></tr> <tr><td>32</td><td>2600</td></tr> <tr><td>62</td><td>1300</td></tr> <tr><td>76</td><td>650</td></tr> </table>	7	2600	18	32	2600	62	1300	76	650
6	2600	3,7																		
25	2600	14,7																		
50	1300	14,7																		
7	2600	18																		
32	2600																			
62	1300																			
76	650																			
CARRELLO TROLLEY DISTRIBUCIÓN	<table border="1"> <tr><td>21</td><td>1,5</td></tr> <tr><td>42</td><td>2,2</td></tr> </table>	21	1,5	42	2,2	<table border="1"> <tr><td>10</td><td rowspan="3">2,2</td></tr> <tr><td>26</td></tr> <tr><td>50</td></tr> </table>	10	2,2	26	50										
21	1,5																			
42	2,2																			
10	2,2																			
26																				
50																				
ROTAZIONE SLEWING ORIENTACIÓN	0,3 - 0,9 rpm ELECTRONIC SENSITIVE SLEWING	55 Nm																		
TRASLAZIONE RAIL CARRIL	17.0 m/min.	2 x 2,2 kW																		

OPTIONAL



DBLink



LOAD
tm MOMENT
WIND SPEED
BASE TILTING
TROLLEY POS.
SLEW POS.
SMART FUNCT.

DBLink 4.0

LIGHT
SIGNALPANEL INSIDE
THE CABIN



sky 400