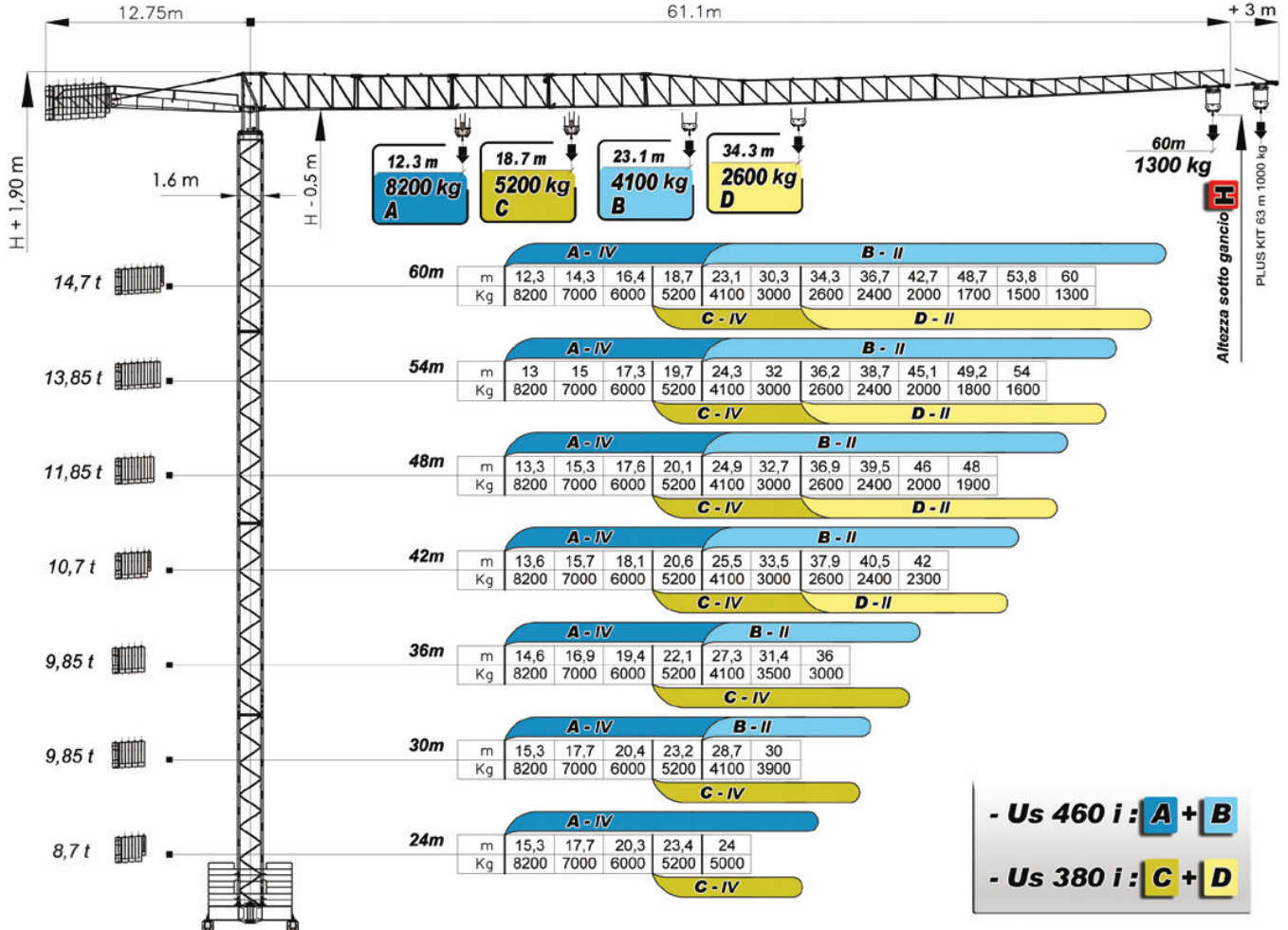


sky600

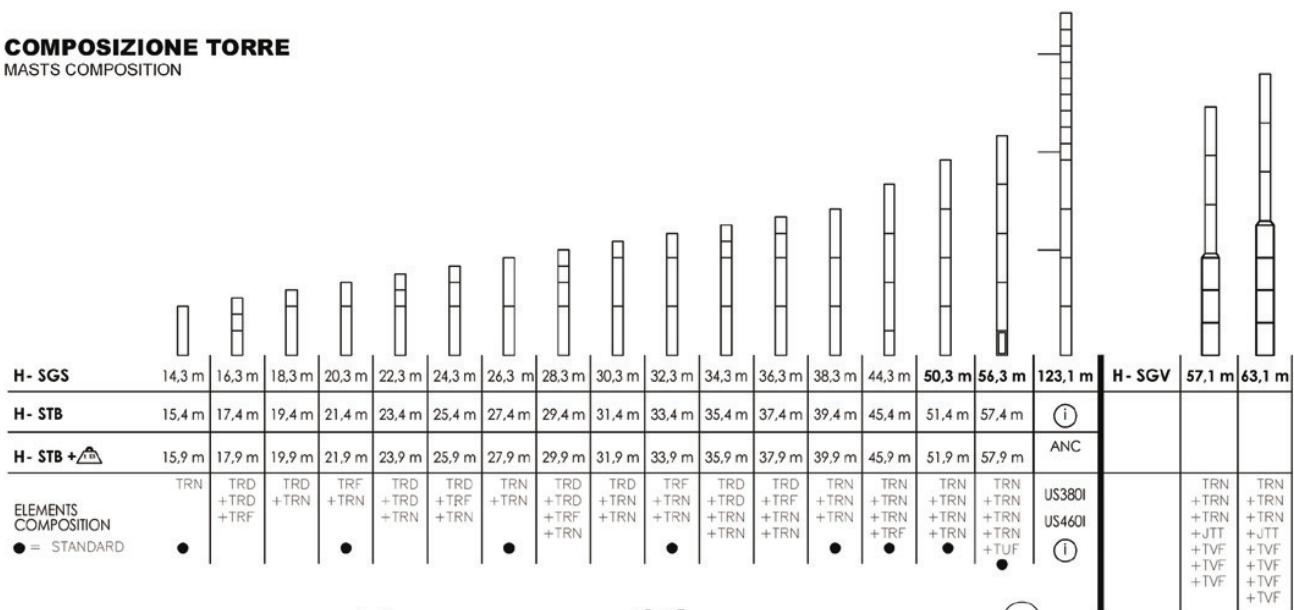
CRANES



I dati e le misure hanno un valore indicativo, pertanto non sono impegnativi - Technical data are not binding and are only indicative.

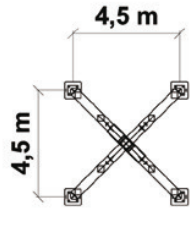
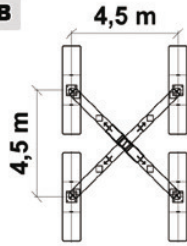


COMPOSIZIONE TORRE MASTS COMPOSITION



SUPPORTI
GROUND SUPPORTS

STB



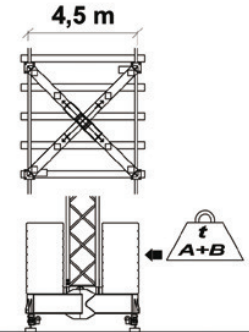
STB

$t A$	H
t 60	m 51,9
t 54	m 45,9
t 42	m 39,9
t 36	m 33,9
t 30	m 27,9
$t B$	t 10

SGS



SSR



$F \downarrow F_{max} = 58,7 t$

$F \downarrow F_{max} = 57,7 t$

$T = 107 t$
 $T \downarrow P \uparrow$

$F \downarrow F_{max} = 58,7 t$

GRUPPO MOTORE
MOTOR GROUP



Us 460 i

400 V (+/- 5%) - 50 Hz
40 kW
Trifase - Threephase

kg	m/min	Hp
0 < • < 4100	1	5
0 < • < 4100	2	33
0 < • < 2600	3	50
0 < • < 2600	4	76 > m/min > 50 VARIOMATIC

ELECTRONIC FINE ADJUSTMENT

0 < • < 8200	1	2,5
0 < • < 8200	2	16,5
0 < • < 5200	3	25
0 < • < 5200	4	38 > m/min > 25 VARIOMATIC

ELECTRONIC FINE ADJUSTMENT

kg	m/min	Hp
0 < • < MAX	1	8
0 < • < MAX	2	34
0 < • < 2600	3	68

ELECTRONIC FINE ADJUSTMENT

Us 380 i

400 V (+/- 5%) - 50 Hz
31 kW
Trifase - Threephase

kg	m/min	Hp
0 < • < 2600	1	5
0 < • < 2600	2	32
0 < • < 1300	3	56
0 < • < 1300	4	75 > m/min > 56 VARIOMATIC

ELECTRONIC FINE ADJUSTMENT

0 < • < 5200	1	2,5
0 < • < 5200	2	16
0 < • < 2600	3	28
0 < • < 2600	4	37,5 > m/min > 28 VARIOMATIC

ELECTRONIC FINE ADJUSTMENT

kg	m/min	Hp
0 < • < MAX	8	
0 < • < MAX	26	3
0 < • < 2600	52	

ELECTRONIC FINE ADJUSTMENT

SOLLEVAMENTO HOIST

CARRELLO TROLLEY

ROTAZIONE SLEWING

TRASL. RAIL

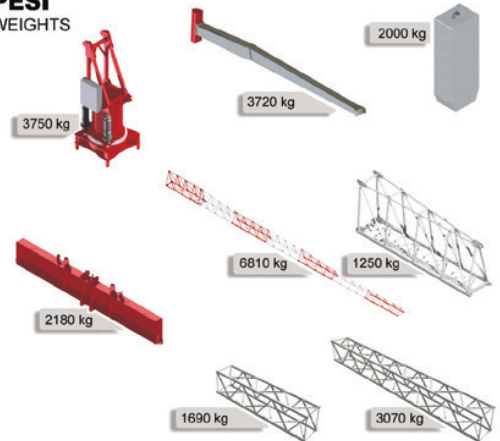
rpm	Nm
0	0,3
1	2 x 65
0,3	0,8
2	

ELECTRONIC SENSITIVE SLEWING

m/min	Hp
12	4 x 3



PESI WEIGHTS



DBLink +
4.0



LOAD
t m MOMENT
WIND SPEED
BASE TILTING
TROLLEY POS.
SLEW POS.
SMART FUNCT.





sky 600